

Plant and Animal Cells

Task: Cell Colouring

A. Animal Cells

I. Directions: Color each part of the cell its designated color.

Cell Membrane (light brown)

Nucleolus (black)

Mitochondria (orange)

Cytoplasm (light yellow)

Golgi Apparatus (pink)

Lysosome (purple)

Nucleoplasm (pink)

Flagella (red/blue striped)

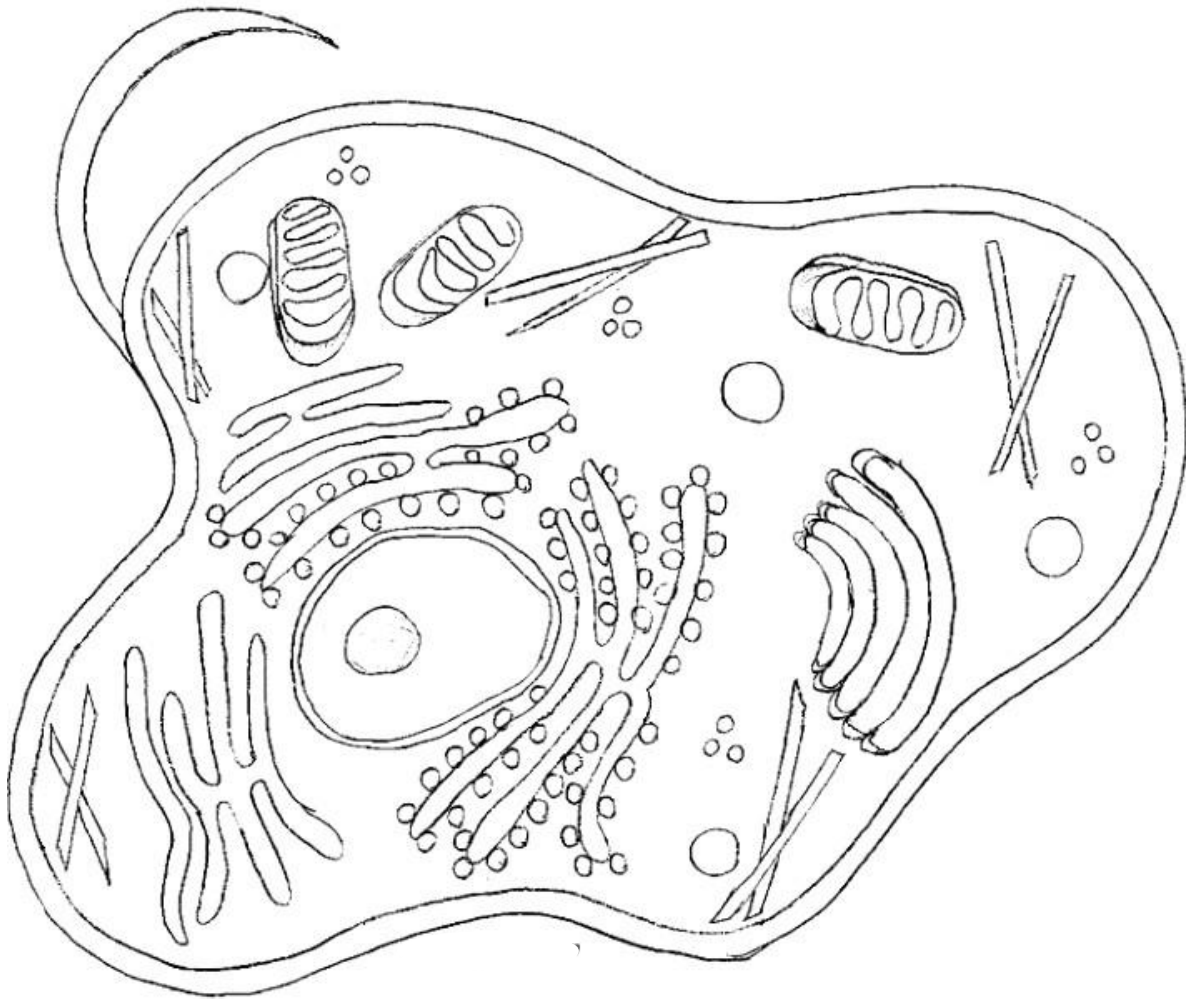
Ribosome (red)

Nuclear Membrane (dk brown)

Rough Endoplasmic Reticulum (dark blue)

Microtubules (dark green)

Smooth Endoplasmic Reticulum (light blue)



II. Briefly describe the function of the cell parts.

1. Cell membrane	5. Lysosome
2. Endoplasmic Reticulum	6. Microtubule
3. Ribosome	7. Mitochondria
4. Golgi Apparatus	8. Nucleus

B. Plant Cell Coloring

I. Directions: Color each part of the cell its designated color.

Cell Membrane (orange)

Nucleoplasm (yellow)

Mitochondria (red)

Vacuole (light Blue)

Chromatin (gray)

Cell Wall (dark green)

Nucleolus (brown)

Chloroplasts (light green)

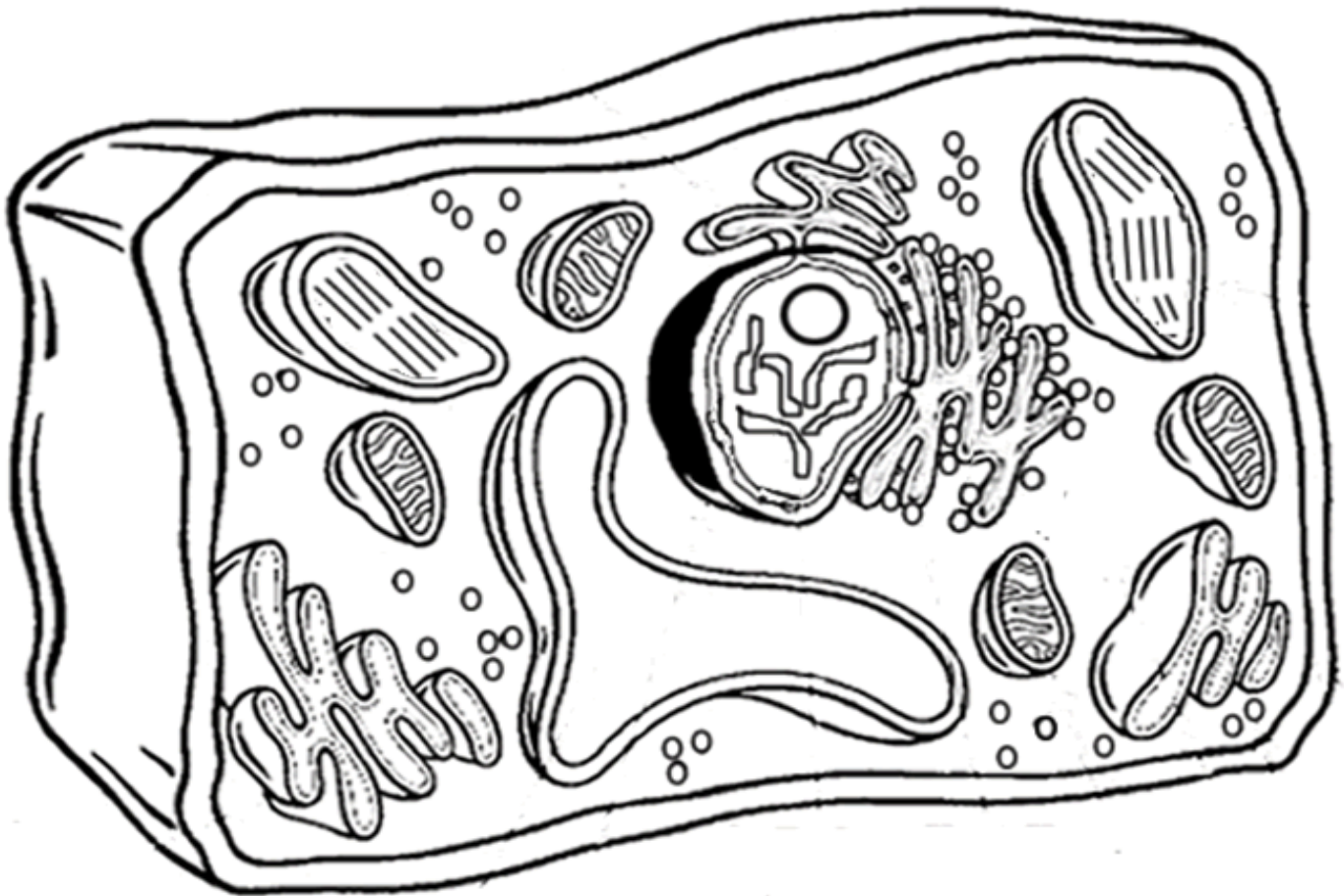
Smooth Endoplasmic Reticulum (pink)

Rough Endoplasmic Reticulum (pink)

Ribosome (purple)

Cytoplasm (white)

Golgi Apparatus (dark blue)



Analysis

1. Name two things found in a plant cell that are not found in an animal cell:
2. What is the function of the chloroplasts?
3. What is the function of the vacuole?