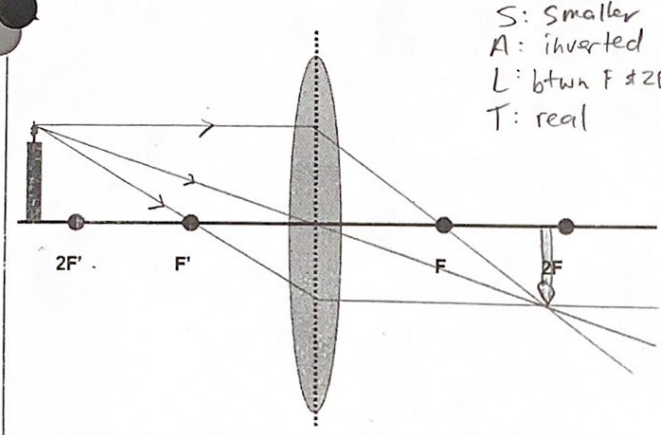


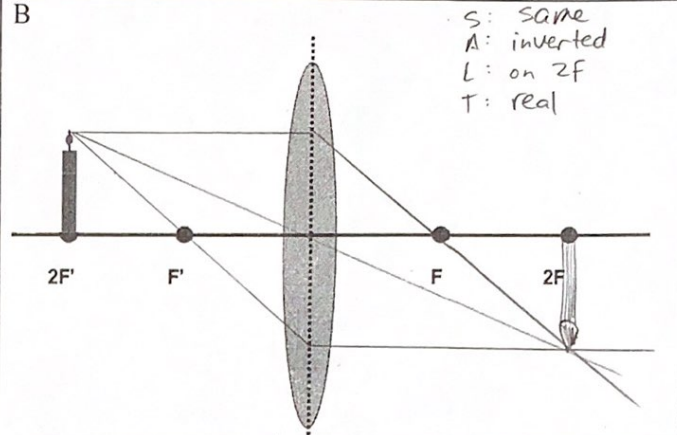
Key

### WORKSHEET: IMAGES IN LENSES

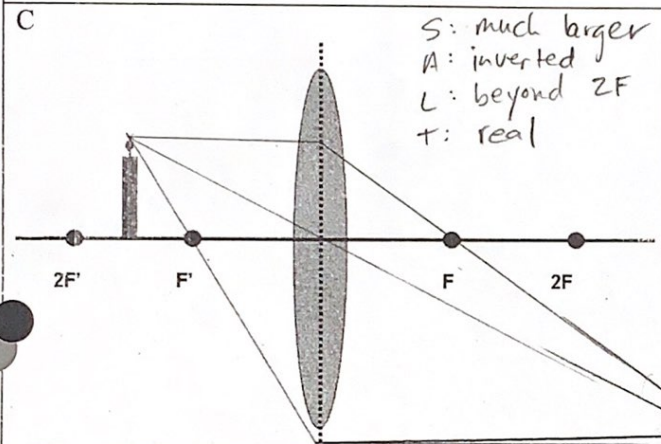
Locate the image in each of the following scenarios, and describe each image using SALT.



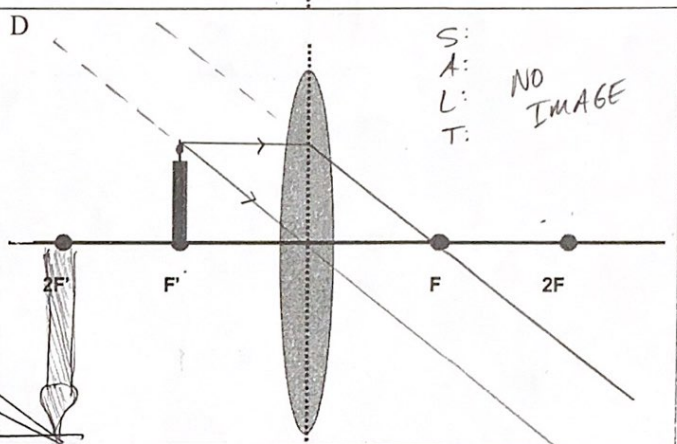
S: smaller  
A: inverted  
L: btwn  $F$  &  $2F$   
T: real



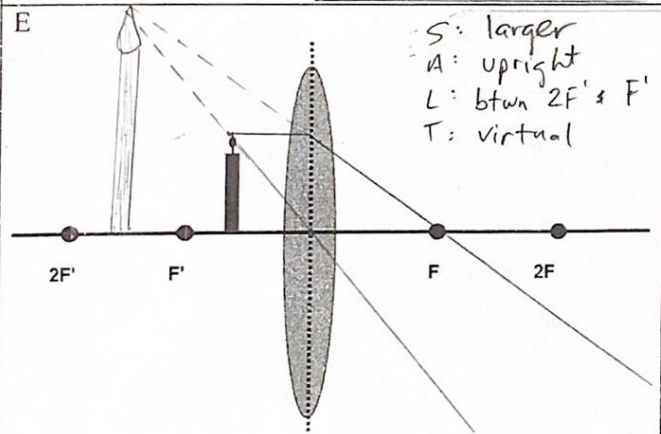
S: same  
A: inverted  
L: on  $2F$   
T: real



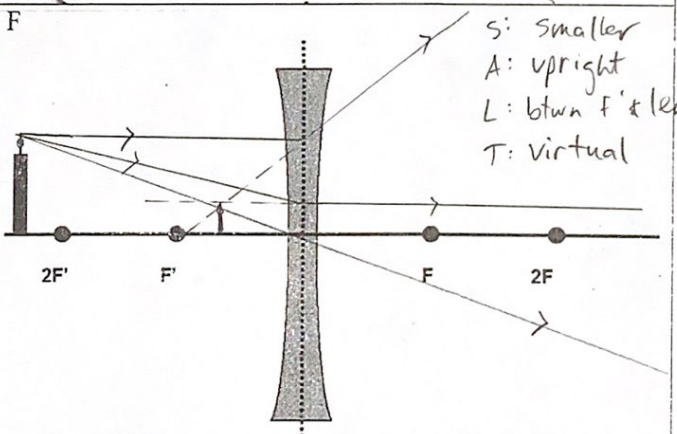
S: much larger  
A: inverted  
L: beyond  $2F$   
T: real



S:  
A: NO IMAGE  
L: NO IMAGE  
T:



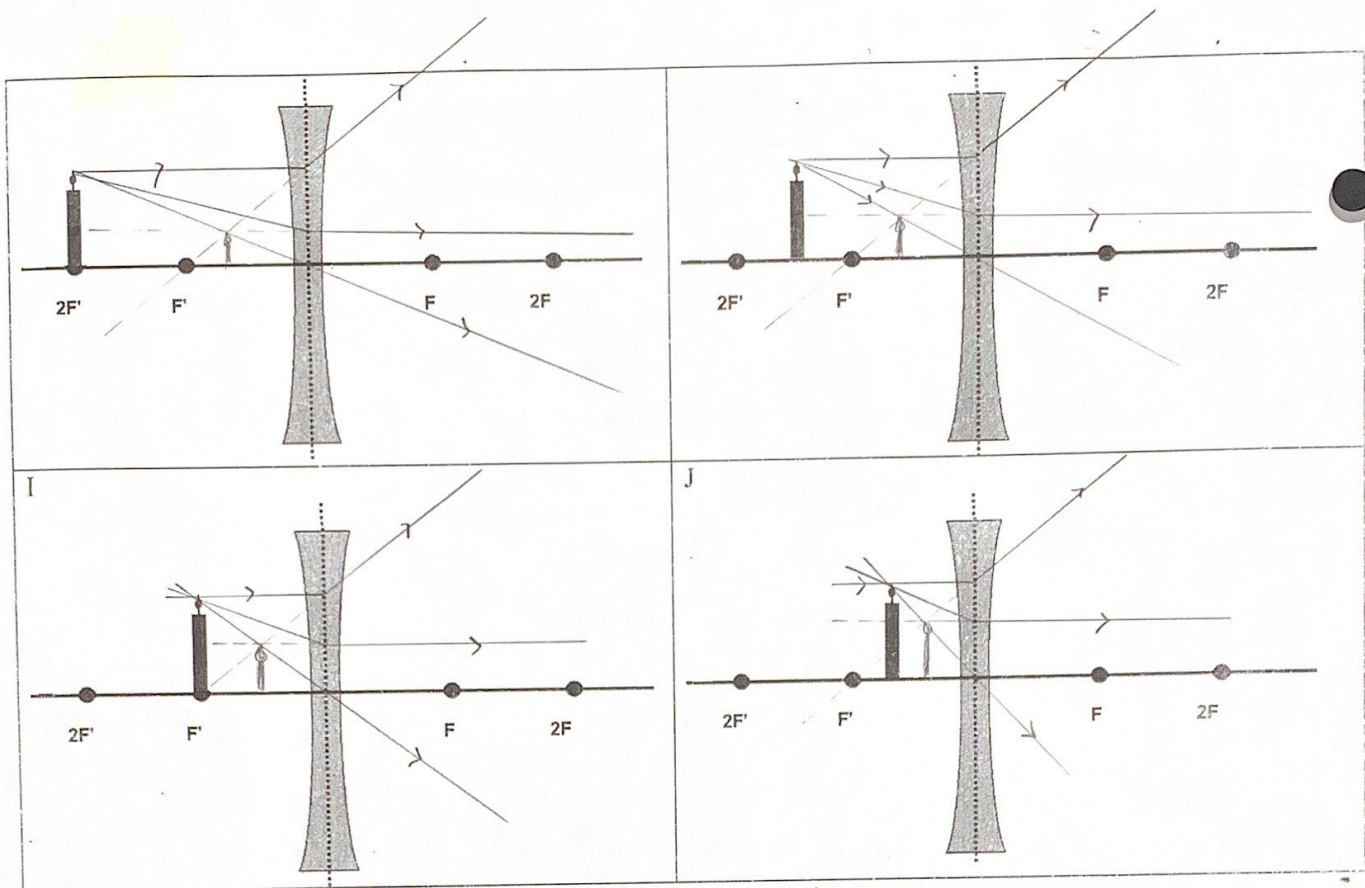
S: larger  
A: upright  
L: btwn  $2F'$  &  $F'$   
T: virtual



S: smaller  
A: upright  
L: btwn  $F'$  & lens  
T: virtual

G

H



S: smaller  
 A: upright  
 L: between focus & lens  
 T: virtual