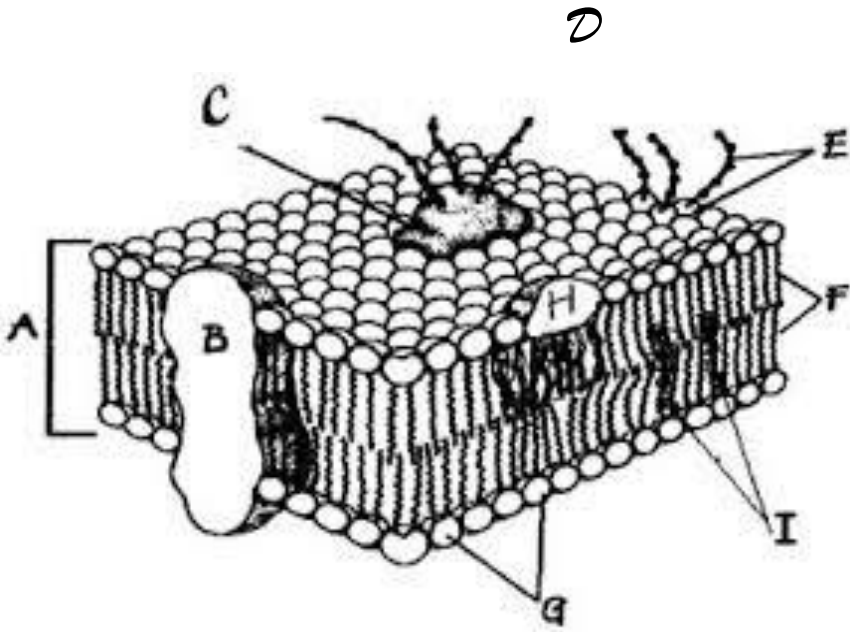


Cell Membranes and the Movement of Matter

Fluid Mosaic Model of the Cell Membrane:

1. Use your text p. 62 to label the parts of this model in the table.



Cell Membrane Part	Name
A	
B	
C	Membrane protein
D	
E	
F	
G	
H	Membrane protein
I	

2. Complete the following chart comparing the structure and function of the parts of the cell membrane. (p.63)

Cell Membrane part	Structure	Function
Phospholipids		
Proteins		
Cholesterol		
Carbohydrates		

3. Use the glossary in your text to define the following terms:

Hydrophilic:

Hydrophobic:

4. What is the function of the cell membrane?

5. Explain why the words *fluid* and *mosaic* are both appropriate to describe the current model of the cell membrane.

6. What does it mean when a biologist describes the cell membrane as “semi-permeable”?

7. Why is it important for the cell membrane of plant and animal cells to be semi-permeable?